



## Quench 580 Pre-Installation Requirements Checklist

Thank you for being a Quench customer! We are excited for your workplace to experience the great-tasting sparkling water from your new Quench 580. Before our certified technician can install your machine, the following pre-installation requirements must be completed.

### Water Supply & Shut Off

- 3/8" potable cold water supply line that a Quench technician can connect to
- Minimum water supply pressure 14.5 PSI, 1 gallon per minute minimum flowrate; Quench technician will install a pressure reducer above 51 PSI
- Optional drain connection for the drip tray

### Electrical

- 115 VAC/60Hz/15 amp (standard 3-prong) GFCI protected electrical circuit
  - The chiller/carbonator draws 3.5 amps and the counter mounted tower draws 1 amp so the chiller/carbonator and counter mounted tower can be on the same circuit
- Electrical connections within 5' of machine location; **NO EXTENSION CORDS**

### Countertop Holes & Drain Line

- 2" diameter hole for the tap and drain hole;
  - Quench technicians are only permitted to drill up to 1-1/2" diameter holes through laminate or Corian counters. Any other surface or hole size must be pre-drilled prior to install
- Customer needs to supply a rigid vertical pipe that drains to a properly trapped drain according to local codes. The vertical pipe for the drip tray drain must be located inside the installation cabinet and must be at least 1 1/4" ID.

### Machine Placement & Ventilation

- The chiller/carbonator must be installed in the cabinet directly below or directly adjacent to the tap head.
- The dispenser is 18" tall, ensure proper clearance between dispenser and any wall-mounted cabinets.
- If installed in an enclosed space, adequate ventilation must be provided.
  - 4" space on all sides (front, rear, left and right sides) and 8" minimum above the machine
  - The enclosed cabinet must allow air to flow through from bottom of the cabinet to the top

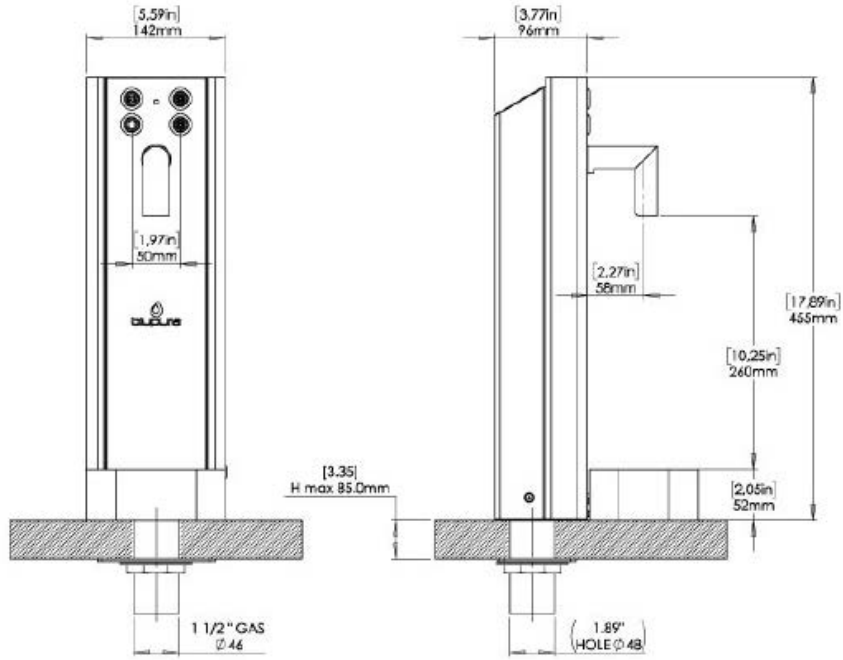
### CO<sub>2</sub> Supply

- Full CO<sub>2</sub> cylinder must be on-site before installation
  - If connecting to a bulk or existing CO<sub>2</sub> system, a CO<sub>2</sub> line terminating at a 1/4" barbed shutoff valve must be available within 40" of the installation site
  - Minimum CO<sub>2</sub> pressure is 100 PSI

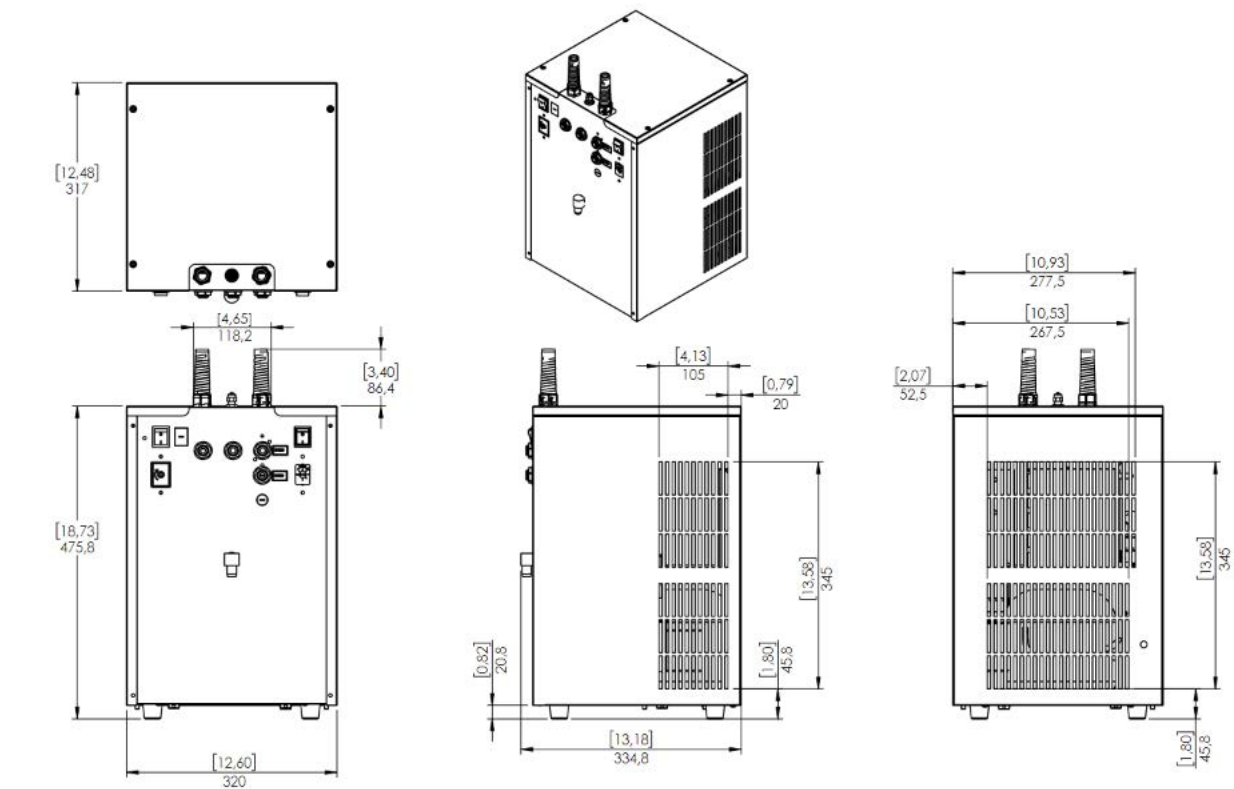
If you have any questions about the installation, call Customer Care at 888-554-2782

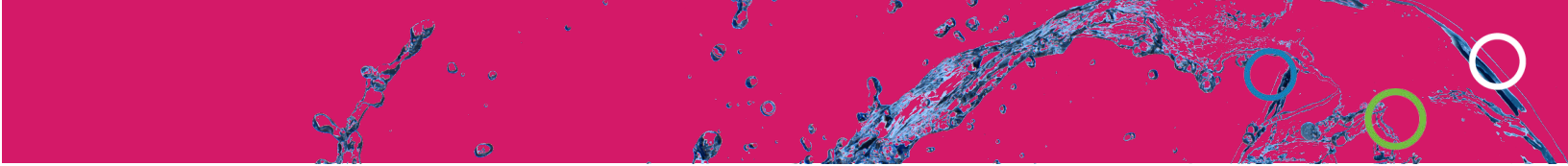


## Tap Countertop Placement Drawing



## Chiller/Carbonator Placement Drawing





## Drain Line Placement Illustration

